



**READYMIX CONCRETE (VIET NAM) JOINT STOCK COMPANY**  
 Unit 420-421 CT5 My Dinh new Urban Zone - Me Tri, Tu Liem, Ha Noi  
 Tel: 04.3785.3740 Fax: 04.3785.3739



**LABORATORY STANDARD LAS 417**  
 Tel: 04.39843569 Fax: 04.38629210

Published on:  
 .....

## MIX DESIGN SUBMISSION

**Project:** THE PROJECTS IN HANOI  
**Other note:** Ha Noi, Viet Nam

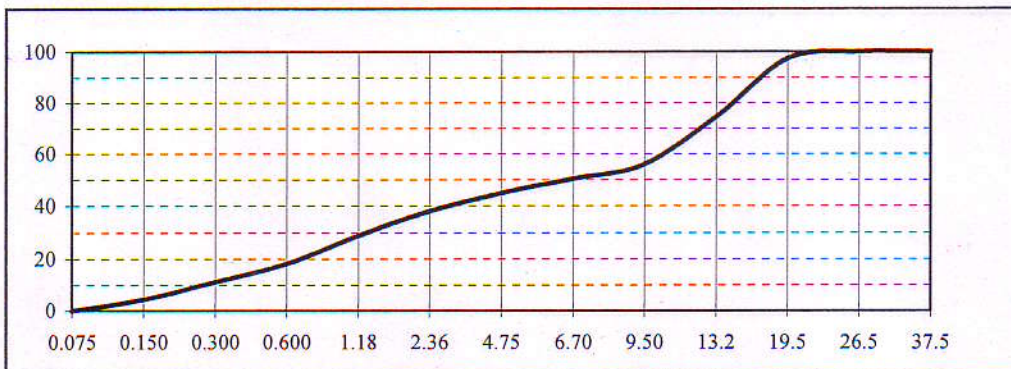
Mix Specification		Specified Requirement	Proposed Mix
		50 MPa Pumpmix	
Characteritis Strength at 28 days ( Cube)	(MPa)	50	50
Maximum Water/Cement Ratio	(mm)	20	20
Slump	(mm)	180 ± 20	180 ± 20
Actual Water/ Cement Ratio			0.34
Minimum Cement Content	(kg/m3)	Not Spec.	490
Aggregate/ Cement Ratio		Not Spec.	3.62
Air Content		Not Spec.	2%

### Mix Proportion Calculation

Material	Source	Type	SSD Batch Weight	Aggregate Proportions	Specyfic gravity	Volume (/m <sup>3</sup> )
Cement	HaiPhong	PCB40	490		3.15	0.156
Aggregate	Phu ly	20-10 mm	804	45.3%	2.73	0.295
Aggregate	Phu ly	10-5 mm	176	9.9%	2.71	0.065
Sand	Lo River	Screened	795	44.8%	2.66	0.299
Admixture 1	Mapei	Dynamon SR1	5.145	LTR		0.005
Admixture 2	Mapei		0.000	LTR		0.000
Water			160	LTR	1.00	0.160
Air Content			2.0%			0.020
<b>TOTAL</b>						<b>1.000</b>

*Readymix reserves the right to modify mix proportions to ensure continued compliance with the agreed specification requirement.  
 Such changes may occur to maintain mix quality following variations in the performance of raw materials within agreed specification limits.*

### Combined Aggregate Grading Curve



Mix Design: 05/05/2010

CONCRETE ENGINEER

GENERAL MANAGER



Thai Toan



Tran Phuong Dong