



READYMIX CONCRETE (VIET NAM) JOINT STOCK COMPANY
 Unit 420-421 CT5 My Dinh new Urban Zone - Me Tri, Tu Liem, Ha Noi
 Tel: 04.3785.3740 Fax: 04.3785.3739



LABORATORY STANDARD LAS 417
 Tel: 04.39843569 Fax: 04.38629210

Published on:

MIX DESIGN SUBMISSION

Project: THE PROJECTS IN HANOI
Other note: Ha Noi, Viet Nam

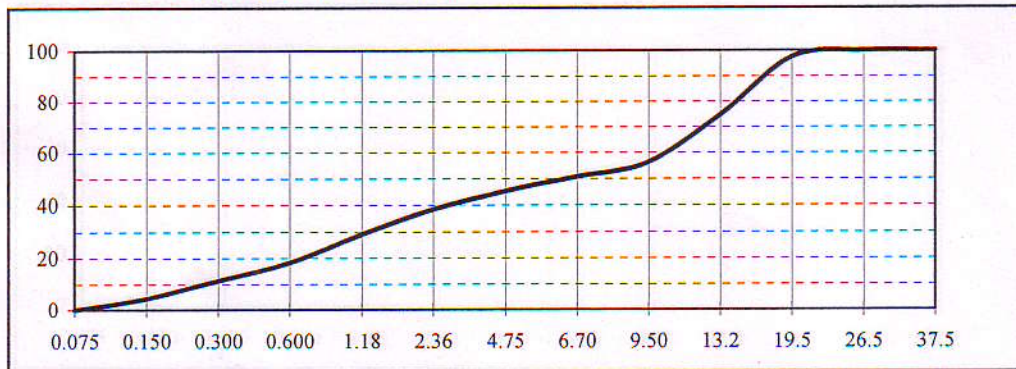
Mix Specification	Specified Requirement	Proposed Mix
	30 MPa Pumpmix	
Characteristic Strength at 28 days (Cube) (MPa)	30	30
Maximum Water/Cement Ratio (mm)	20	20
Slump (mm)	120 ± 20	120 ± 20
Actual Water/ Cement Ratio		0.55
Minimum Cement Content (kg/m ³)	Not Spec.	363
Aggregate/ Cement Ratio	Not Spec.	4.92
Air Content	Not Spec.	2%

Mix Proportion Calculation

Material	Source	Type	SSD Batch Weight	Aggregate Proportions	Specific gravity	Volume (/m ³)
Cement	HaiPhong	PCB40	363		3.15	0.115
Aggregate	Phu ly	20-10 mm	804	45.0%	2.73	0.295
Aggregate	Phu ly	10-5 mm	176	9.9%	2.71	0.065
Sand	Lo River	Screened	807	45.2%	2.66	0.304
Admixture 1	BASF	P300R	1.162	LTR		0.001
Admixture 2	BASF		0.000	LTR		0.000
Water			200	LTR	1.00	0.200
Air Content			2.0%			0.020
TOTAL						1.000

Readymix reserves the right to modify mix proportions to ensure continued compliance with the agreed specification requirement. Such changes may occur to maintain mix quality following variations in the performance of raw materials within agreed specification limits.

Combined Aggregate Grading Curve



Mix Design: 05/05/2010

CONCRETE ENGINEER

XD
LAS417
 Thai Toan

GENERAL MANAGER

CÔNG TY CỔ PHẦN BÊ TÔNG READYMIX (VIỆT NAM)
 H. TỰ LIÊM - TP. HÀ NỘI
 Tran Phuong Dong