



**READMIX CONCRETE (VIET NAM) JOINT STOCK COMPANY**  
 Unit 420-421 CT5 My Dinh new Urban Zone - Me Tri, Tu Liem, Ha Noi  
 Tel: 04.3785.3740 Fax: 04.3785.3739



**LABORATORY STANDARD LAS 417**  
 Tel: 04.39843569 Fax: 04.38629210

Published on:  
 .....

## MIX DESIGN SUBMISSION

**Project:** THE PROJECTS IN HANOI  
**Other note:** Ha Noi, Viet Nam

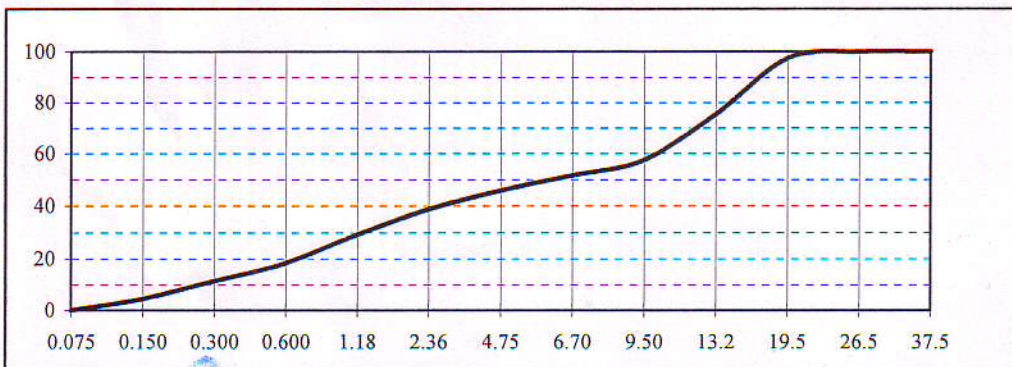
Mix Specification	Specified Requirement	Proposed Mix
	25 MPa Pumpmix	
Characteristic Strength at 28 days ( Cube) (MPa)	25	25
Maximum Water/Cement Ratio (mm)	20	20
Slump (mm)	120 ± 20	120 ± 20
Actual Water/ Cement Ratio		0.60
Minimum Cement Content (kg/m <sup>3</sup> )	Not Spec.	325
Aggregate/ Cement Ratio	Not Spec.	5.66
Air Content	Not Spec.	2%

### Mix Proportion Calculation

Material	Source	Type	SSD Batch Weight	Aggregate Proportions	Specific gravity	Volume (/m <sup>3</sup> )
Cement	HaiPhong	PCB40	325		3.15	0.103
Aggregate	Phu ly	20-10 mm	800	43.5%	2.73	0.294
Aggregate	Phu ly	10-5 mm	200	10.9%	2.71	0.074
Sand	Lo River	Screened	838	45.6%	2.66	0.315
Admixture 1	BASF	P300R	0.975	LTR		0.001
Admixture 2	BASF		0.000	LTR		0.000
Water			193	LTR	1.00	0.193
Air Content			2.0%			0.020
<b>TOTAL</b>						<b>1.000</b>

Readymix reserves the right to modify mix proportions to ensure continued compliance with the agreed specification requirement. Such changes may occur to maintain mix quality following variations in the performance of raw materials within agreed specification limits.

### Combined Aggregate Grading Curve



Mix Design: 05/05/2010

CONCRETE ENGINEER

**XD**  
**LAS417**  
 Thai Toan

GENERAL MANAGER

**CÔNG TY CỔ PHẦN BÊ TÔNG READMIX (VIỆT NAM)**  
 H. TỰ LIÊM - TP. HÀ NỘI  
 Tran Phuong Dong